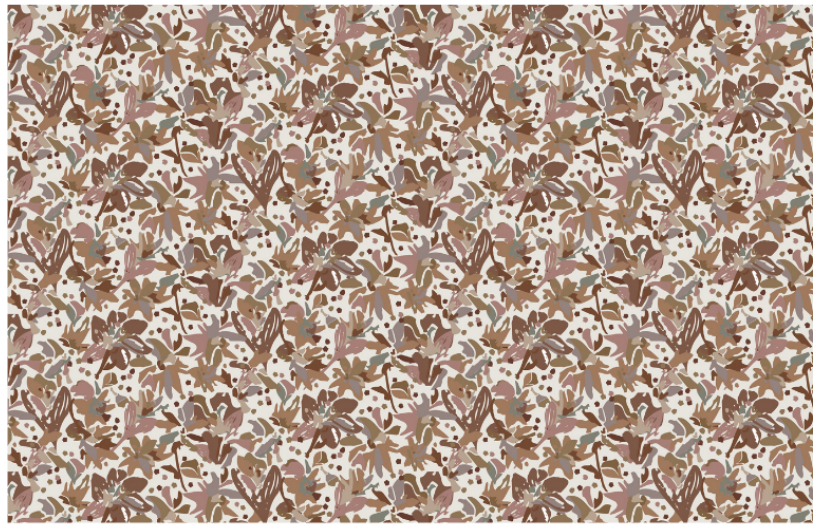


# Eden Fabric in Autumn

THE FLORA COLLECTION



\*Digital art is for pattern reference only and represents scale of 22" wide x 15" tall

FABRIC CONTENT	100% BELGIAN LINEN • OATMEAL
FABRIC WEIGHT	7 OZ.
PRINTED WIDTH	54"
REPEAT	13.5" HORIZONTAL • 4.5" VERTICAL
APPLICATIONS	DRAPERY • ROMAN SHADES • PILLOWS CUSHIONS • LIGHT UPHOLSTERY
CARE	SPOT CLEAN OR DRY CLEAN
PRODUCTION	DIGITALLY PRINTED IN THE USA
FINISHING OPTIONS	PERFORMANCE FINISHES & BACKING AVAILABLE UPON REQUEST
INVENTORY	PRINTED TO ORDER • NO CFAS
LEAD TIME	APPROXIMATELY 2 WEEKS

## PATTERN

EDEN

## COLORWAY

AUTUMN

## INSPIRATION

This multicolor design is inspired by natural gardens and roadside wildflowers, capturing the organic, untamed beauty of the countryside.



VIEW PRODUCT DETAILS ONLINE

# EMILY DAW S

## FLAGSHIP SHOWROOM

505 HAYES PARK BLVD.

JOHNS ISLAND SC 29455

INFO@EMILYDAWSTEXTILES.COM

WWW.EMILYDAWSTEXTILES.COM