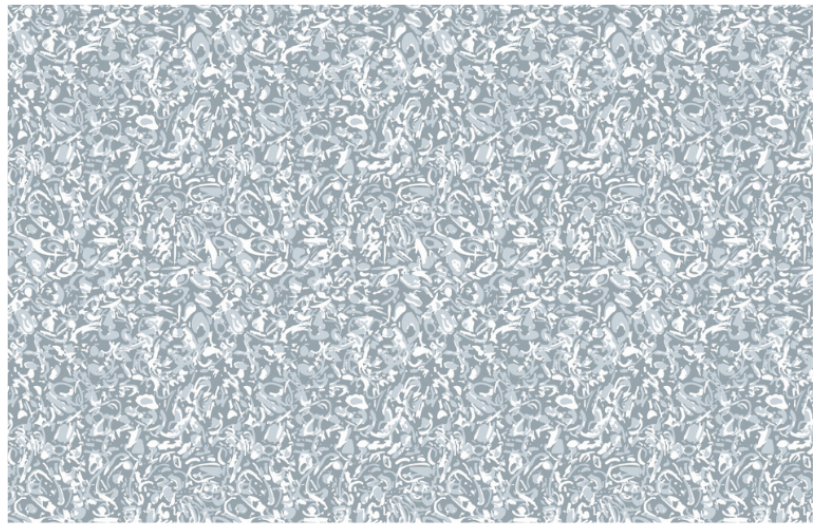
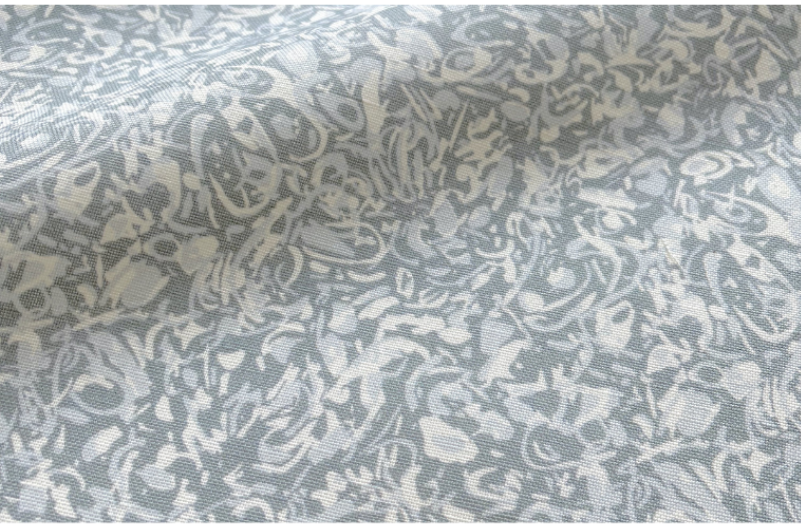


Estuary Fabric in Heron

THE WATERWAYS COLLECTION



*Digital art is for pattern reference only and represents scale of 22" wide x 15" tall

FABRIC CONTENT	100% BELGIAN LINEN • OYSTER
FABRIC WEIGHT	7 OZ.
PRINTED WIDTH	54"
REPEAT	4.50" HORIZONTAL • 8" VERTICAL
APPLICATIONS	DRAPERY • ROMAN SHADES • PILLOWS CUSHIONS • LIGHT UPHOLSTERY
CARE	SPOT CLEAN OR DRY CLEAN
PRODUCTION	DIGITALLY PRINTED IN THE USA
FINISHING OPTIONS	PERFORMANCE FINISHES & BACKING AVAILABLE UPON REQUEST
INVENTORY	PRINTED TO ORDER • NO CFAS
LEAD TIME	APPROXIMATELY 2 WEEKS

PATTERN
ESTUARY

COLORWAY
HERON

INSPIRATION

Estuary draws from crushed seashells found in terrazzo, translated into simple shapes arranged in a mosaic of color.



VIEW PRODUCT DETAILS ONLINE

EMILY DAW S

FLAGSHIP SHOWROOM

505 HAYES PARK BLVD.
JOHNS ISLAND SC 29455
INFO@EMILYDAWSTEXTILES.COM

WWW.EMILYDAWSTEXTILES.COM