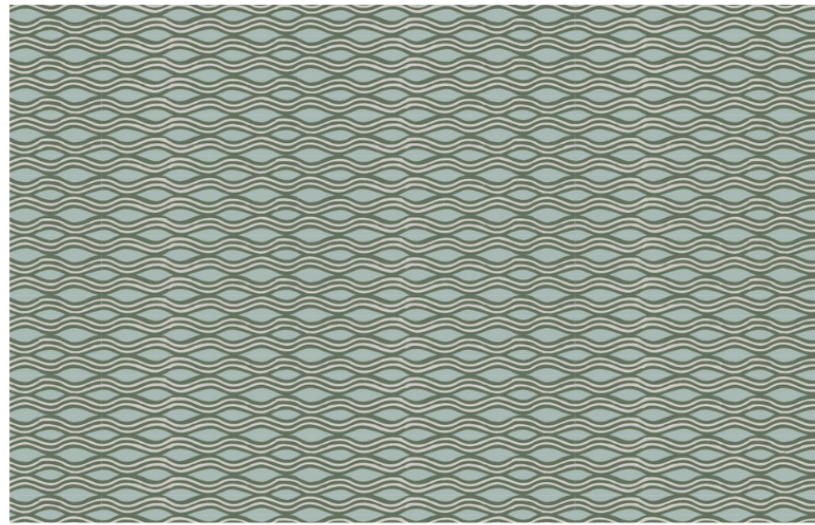


# Inlet Fabric in Juniper

THE WATERWAYS COLLECTION



\*Digital art is for pattern reference only and represents scale of 22" wide x 15" tall

<b>FABRIC CONTENT</b>	100% BELGIAN LINEN • OYSTER
<b>FABRIC WEIGHT</b>	7 OZ.
<b>PRINTED WIDTH</b>	54"
<b>REPEAT</b>	13.50" HORIZONTAL • 1.20" VERTICAL
<b>APPLICATIONS</b>	DRAPERY • ROMAN SHADES • PILLOWS CUSHIONS • LIGHT UPHOLSTERY
<b>CARE</b>	SPOT CLEAN OR DRY CLEAN
<b>PRODUCTION</b>	DIGITALLY PRINTED IN THE USA
<b>FINISHING OPTIONS</b>	PERFORMANCE FINISHES & BACKING AVAILABLE UPON REQUEST
<b>INVENTORY</b>	PRINTED TO ORDER • NO CFAS
<b>LEAD TIME</b>	APPROXIMATELY 2 WEEKS

## **PATTERN**

INLET

## **COLORWAY**

JUNIPER

## **INSPIRATION**

Inspired by the rhythmic flow of tidal waters, Inlet captures the organic movement of ocean inlets and shifting sandbars. Ideal for custom window treatments and accent pillows.



VIEW PRODUCT DETAILS ONLINE

# EMILY DAW S

## **FLAGSHIP SHOWROOM**

505 HAYES PARK BLVD.

JOHNS ISLAND SC 29455

INFO@EMILYDAWSTEXTILES.COM

WWW.EMILYDAWSTEXTILES.COM