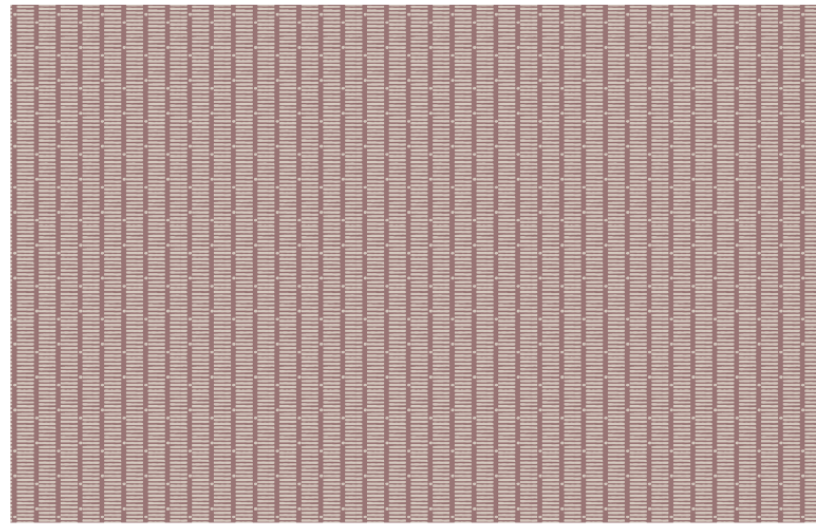
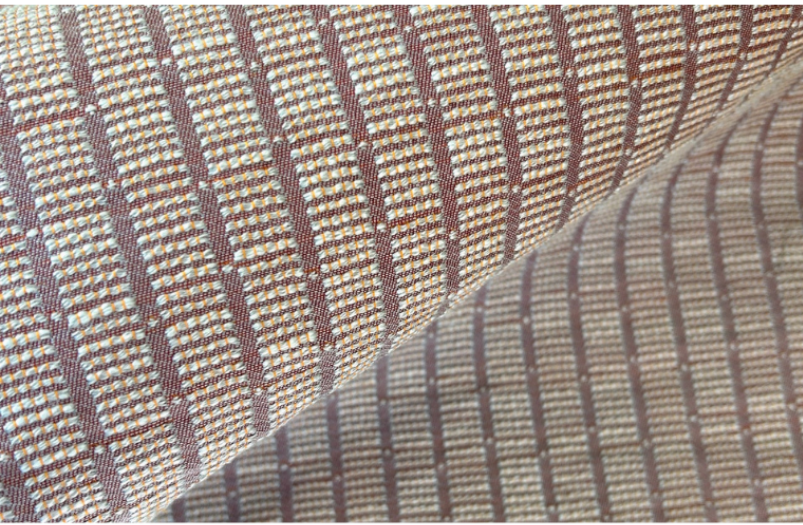


Jetty Fabric in Punch

THE WATERWAYS COLLECTION



*Digital art is for pattern reference only and represents scale of 22" wide x 15" tall

FABRIC CONTENT	55% ECO-POLY, 24% NYLON, 21% COTTON
FABRIC WEIGHT	ACT HEAVY DUTY UPHOLSTERY 40,000+ WYZENBEEK
FABRIC WIDTH	55"
REPEAT	1.12" HORIZONTAL • 1.56" VERTICAL
APPLICATIONS	UPHOLSTERY • ROMAN SHADES • PILLOWS • CUSHIONS
CARE	SPOT CLEAN OR DRY CLEAN
PRODUCTION	WOVEN IN THE USA
FINISHING OPTIONS	PERFORMANCE FINISHES & BACKING AVAILABLE UPON REQUEST
INVENTORY	STOCKED • CFA UPON REQUEST
LEAD TIME	APPROXIMATELY 1 WEEK

PATTERN

JETTY

COLORWAY

PUNCH

INSPIRATION

Jetty draws inspiration from Charleston's marshlands and marinas, where boat docks create a striking network of lines across the water.



VIEW PRODUCT DETAILS ONLINE

EMILY DAWSON

FLAGSHIP SHOWROOM

505 HAYES PARK BLVD.

JOHNS ISLAND SC 29455

INFO@EMILYDAWSTEXTILES.COM

WWW.EMILYDAWSTEXTILES.COM