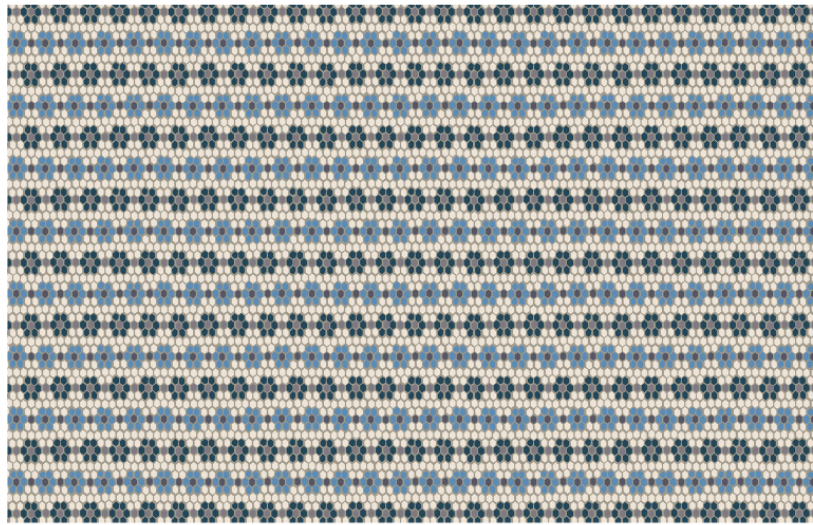
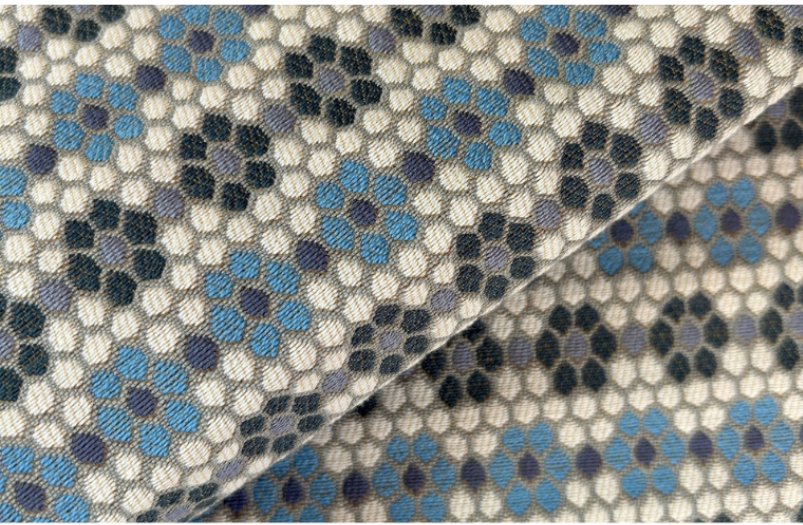


Nectar Fabric in Cerulean Blue

THE FAUNA COLLECTION



*Digital art is for pattern reference only and represents scale of 22" wide x 15" tall

FABRIC CONTENT	79% COTTON, 21% NYLON
FABRIC WEIGHT	ACT HEAVY DUTY UPHOLSTERY 40,000+ WYZENBEEK
FABRIC WIDTH	55"
REPEAT	1.75" HORIZONTAL • 1.75" VERTICAL
APPLICATIONS	UPHOLSTERY • ROMAN SHADES • PILLOWS • CUSHIONS
CARE	SPOT CLEAN OR DRY CLEAN
PRODUCTION	WOVEN IN THE USA
FINISHING OPTIONS	PERFORMANCE FINISHES & BACKING AVAILABLE UPON REQUEST
INVENTORY	STOCKED • CFA UPON REQUEST
LEAD TIME	APPROXIMATELY 1 WEEK

PATTERN

NECTAR

COLORWAY

CERULEAN BLUE

INSPIRATION

Inspired by the delicate geometry of honeycombs, this woven design blends soft florals with a rhythmic hexagonal pattern.



VIEW PRODUCT DETAILS ONLINE

EMILY DAWSON

FLAGSHIP SHOWROOM

505 HAYES PARK BLVD.

JOHNS ISLAND SC 29455

INFO@EMILYDAWSTEXTILES.COM

WWW.EMILYDAWSTEXTILES.COM