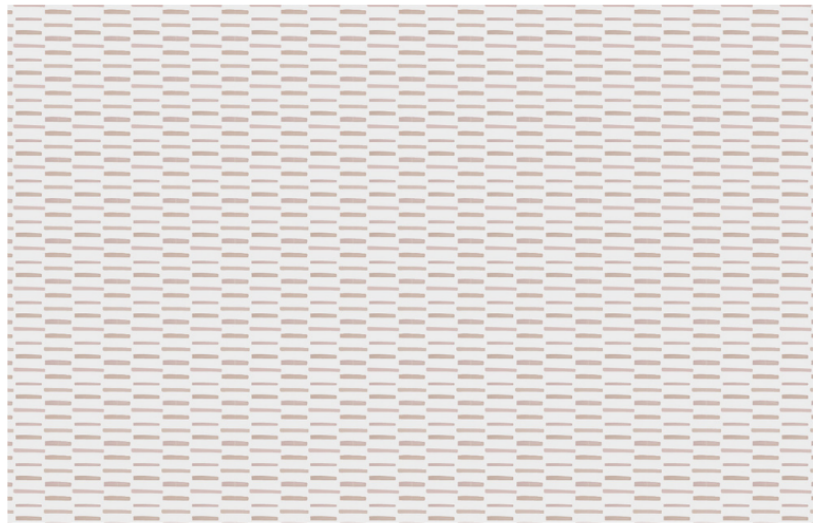


Sweetgrass Fabric in Bloom

THE CHARLESTON COLLECTION



*Digital art is for pattern reference only and represents scale of 22" wide x 15" tall

FABRIC CONTENT	100% BELGIAN LINEN • OYSTER
FABRIC WEIGHT	7 OZ.
PRINTED WIDTH	54"
REPEAT	1.68" HORIZONTAL • 1.15" VERTICAL
APPLICATIONS	DRAPERY • ROMAN SHADES • PILLOWS CUSHIONS • LIGHT UPHOLSTERY
CARE	SPOT CLEAN OR DRY CLEAN
PRODUCTION	DIGITALLY PRINTED IN THE USA
FINISHING OPTIONS	PERFORMANCE FINISHES & BACKING AVAILABLE UPON REQUEST
INVENTORY	PRINTED TO ORDER • NO CFAS
LEAD TIME	APPROXIMATELY 2 WEEKS

PATTERN

SWEETGRASS

COLORWAY

BLOOM

INSPIRATION

Sweetgrass showcases simple watercolor strokes arranged in staggered dashes, inspired by the woven rhythm of Lowcountry basketry.



VIEW PRODUCT DETAILS ONLINE

EMILY DAW S

FLAGSHIP SHOWROOM

505 HAYES PARK BLVD.

JOHNS ISLAND SC 29455

INFO@EMILYDAWSTEXTILES.COM

WWW.EMILYDAWSTEXTILES.COM