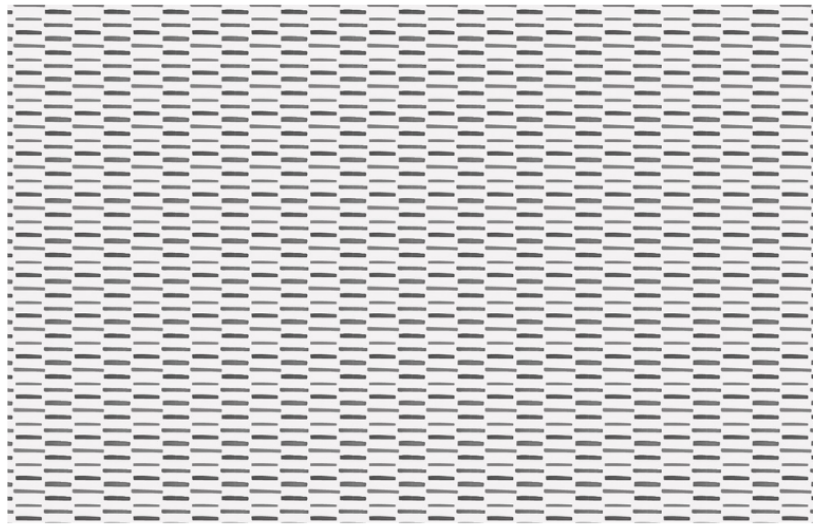
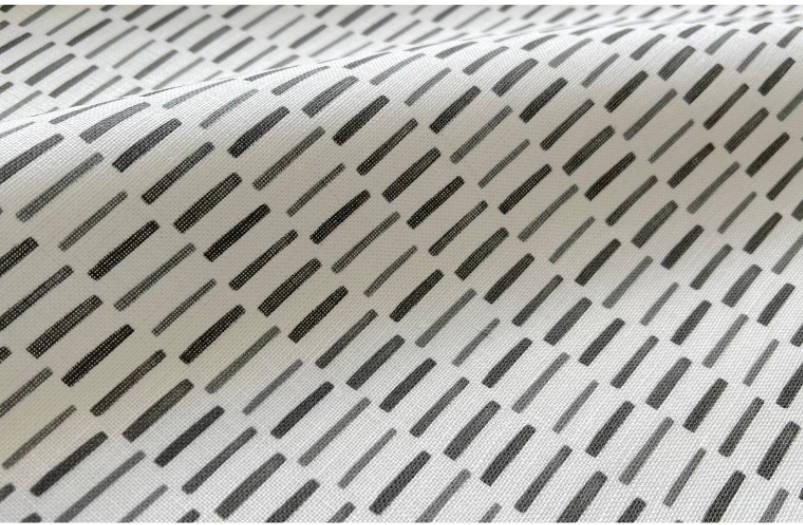


# Sweetgrass Fabric in Graphite

THE CHARLESTON COLLECTION



\*Digital art is for pattern reference only and represents scale of 22" wide x 15" tall

<b>FABRIC CONTENT</b>	100% BELGIAN LINEN • OYSTER
<b>FABRIC WEIGHT</b>	7 OZ.
<b>PRINTED WIDTH</b>	54"
<b>REPEAT</b>	1.68" HORIZONTAL • 1.15" VERTICAL
<b>APPLICATIONS</b>	DRAPERY • ROMAN SHADES • PILLOWS CUSHIONS • LIGHT UPHOLSTERY
<b>CARE</b>	SPOT CLEAN OR DRY CLEAN
<b>PRODUCTION</b>	DIGITALLY PRINTED IN THE USA
<b>FINISHING OPTIONS</b>	PERFORMANCE FINISHES & BACKING AVAILABLE UPON REQUEST
<b>INVENTORY</b>	PRINTED TO ORDER • NO CFAS
<b>LEAD TIME</b>	APPROXIMATELY 2 WEEKS

## **PATTERN**

SWEETGRASS

## **COLORWAY**

GRAPHITE

## **INSPIRATION**

Sweetgrass showcases simple watercolor strokes arranged in staggered dashes, inspired by the woven rhythm of Lowcountry basketry.



VIEW PRODUCT DETAILS ONLINE

# EMILY DAWSON

## **FLAGSHIP SHOWROOM**

505 HAYES PARK BLVD.

JOHNS ISLAND SC 29455

INFO@EMILYDAWSTEXTILES.COM

WWW.EMILYDAWSTEXTILES.COM