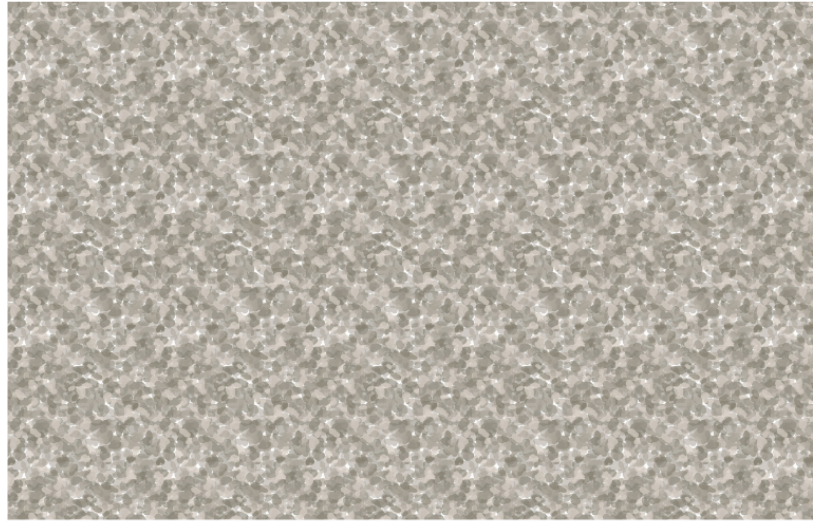
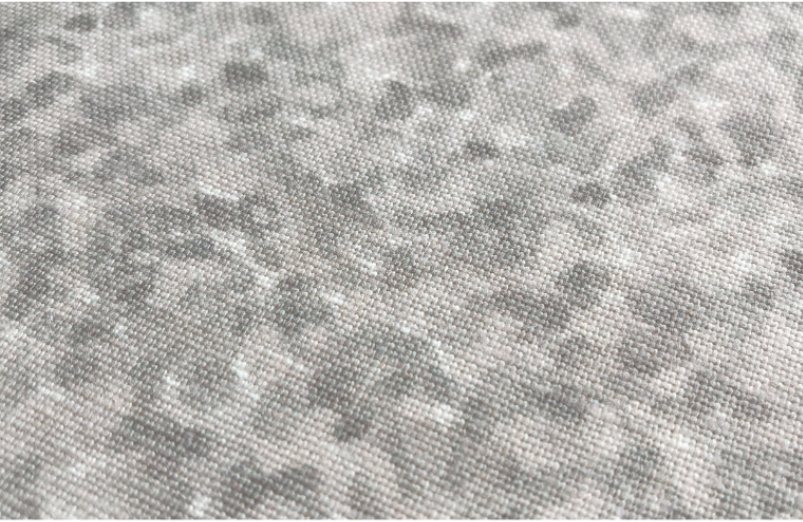


Tortoise Fabric in Morel

THE FAUNA COLLECTION



*Digital art is for pattern reference only and represents scale of 22" wide x 15" tall

FABRIC CONTENT	100% BELGIAN LINEN • OYSTER
FABRIC WEIGHT	10 OZ.
PRINTED WIDTH	53"
REPEAT	4.07" HORIZONTAL • 3.62" VERTICAL
APPLICATIONS	DRAPERY • ROMAN SHADES • PILLOWS CUSHIONS • LIGHT UPHOLSTERY
CARE	SPOT CLEAN OR DRY CLEAN
PRODUCTION	DIGITALLY PRINTED IN THE USA
FINISHING OPTIONS	PERFORMANCE FINISHES & BACKING AVAILABLE UPON REQUEST
INVENTORY	PRINTED TO ORDER • NO CFAS
LEAD TIME	APPROXIMATELY 2 WEEKS

PATTERN
TORTOISE

COLORWAY
MOREL

INSPIRATION

This organic pattern features a distinctive blend of rich hues and irregular, mottled shapes that resemble the natural markings of a tortoise shell.



VIEW PRODUCT DETAILS ONLINE

EMILY DAW S

FLAGSHIP SHOWROOM

505 HAYES PARK BLVD.

JOHNS ISLAND SC 29455

INFO@EMILYDAWSTEXTILES.COM

WWW.EMILYDAWSTEXTILES.COM