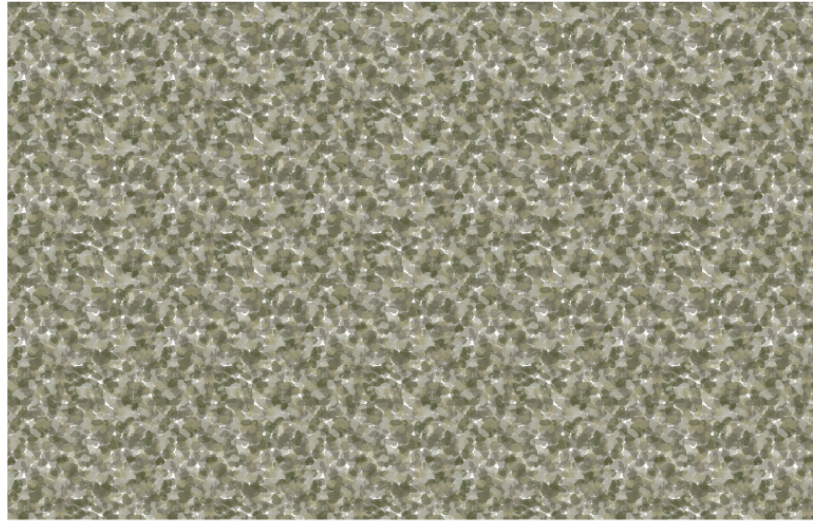
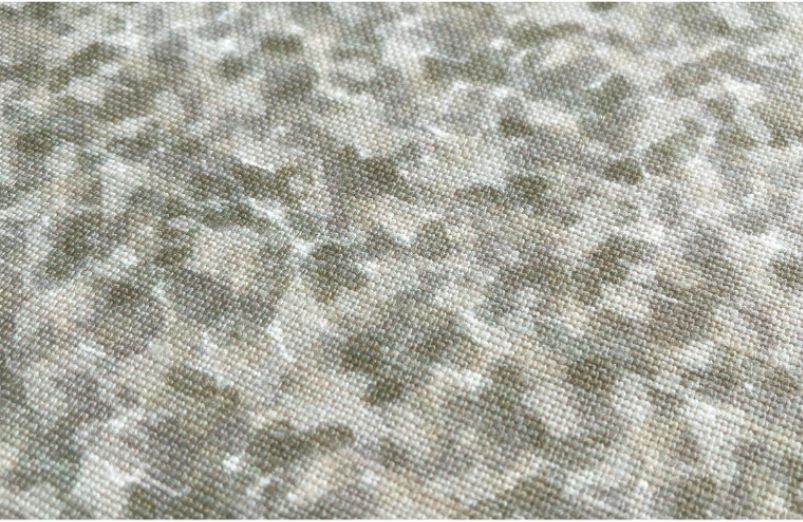


# Tortoise Fabric in Thyme

THE FAUNA COLLECTION



\*Digital art is for pattern reference only and represents scale of 22" wide x 15" tall

|                          |   |
|--------------------------|---|
| <b>FABRIC CONTENT</b>    | 100% BELGIAN LINEN • OYSTER                                     |
| <b>FABRIC WEIGHT</b>     | 10 OZ.  |
| <b>PRINTED WIDTH</b>     | 53"   |
| <b>REPEAT</b>            | 4.07" HORIZONTAL • 3.62" VERTICAL                               |
| <b>APPLICATIONS</b>      | DRAPERY • ROMAN SHADES • PILLOWS<br>CUSHIONS • LIGHT UPHOLSTERY |
| <b>CARE</b>              | SPOT CLEAN OR DRY CLEAN   |
| <b>PRODUCTION</b>        | DIGITALLY PRINTED IN THE USA                                    |
| <b>FINISHING OPTIONS</b> | PERFORMANCE FINISHES & BACKING<br>AVAILABLE UPON REQUEST        |
| <b>INVENTORY</b>         | PRINTED TO ORDER • NO CFAS                                      |
| <b>LEAD TIME</b>         | APPROXIMATELY 2 WEEKS   |

**PATTERN**  
TORTOISE

**COLORWAY**  
THYME

## INSPIRATION

This organic pattern features a distinctive blend of rich hues and irregular, mottled shapes that resemble the natural markings of a tortoise shell.



VIEW PRODUCT DETAILS ONLINE

# EMILY DAW S

## FLAGSHIP SHOWROOM

505 HAYES PARK BLVD.  
JOHNS ISLAND SC 29455  
INFO@EMILYDAWSTEXTILES.COM

WWW.EMILYDAWSTEXTILES.COM